

FSM Collective Impact Phase 2: Building for Sustained Impact

Maddy Day, LLMSW
Director of Outreach and Training
Center for Fostering Success
Western Michigan University

FOSTERING SUCCESS MICHIGAN WEBINAR SERIES



Maddy Day, LLMSW
Director of Outreach and Training
Center for Fostering Success
Western Michigan University

Housekeeping

- Attendees in listen only mode.
- Ask questions using the chat or questions feature.
- Technical difficulties? Contact Citrix team at 1-888-259-8414
- Recording available following the webinar in our resource library on our website.

A Special Thank You To Our Funders

THE
KRESGE
FOUNDATION

THE
HAVIRMILL
FOUNDATION



Why Did FSM Get Started?



The State of Child Welfare and Education

In 2014, an estimated
415,129 youth were in
foster care around
the country
(AFCARS Report, 2015)



Of those, 22,392 youth
transitioned from the foster
care system through
emancipation or aging out.

(AFCARS Report, 2015)

For those youth
transitioning out of foster
care, getting to and
through college
successfully can be
difficult without needed
supports in place



The State of Child Welfare and Education

84% of youth,
ages 17-18,
with experience in
foster care report
wanting to go to
college

(Fostering Success in
Education, 2014)



20% of youth who
graduate from high school
will attend college (and
only 50% graduate high
school by age 18)

(Fostering
Success in
Education, 2014)



Youth with experience in
foster care are up to 8
times less likely to earn
a college degree,
compared to the general
population.

(Wolanin, 2005)

The State of Child Welfare and Education



So what is the
cost of doing
nothing?

On average, for every young person
who ages out of foster care,
taxpayers and communities pay
\$300,000 in social costs (like public
assistance and incarceration)

(Jim Casey Youth Opportunities Initiative, 2013)



This equals = \$6.7 BILLION for the total
22,392 youth who aged out of foster
care this year

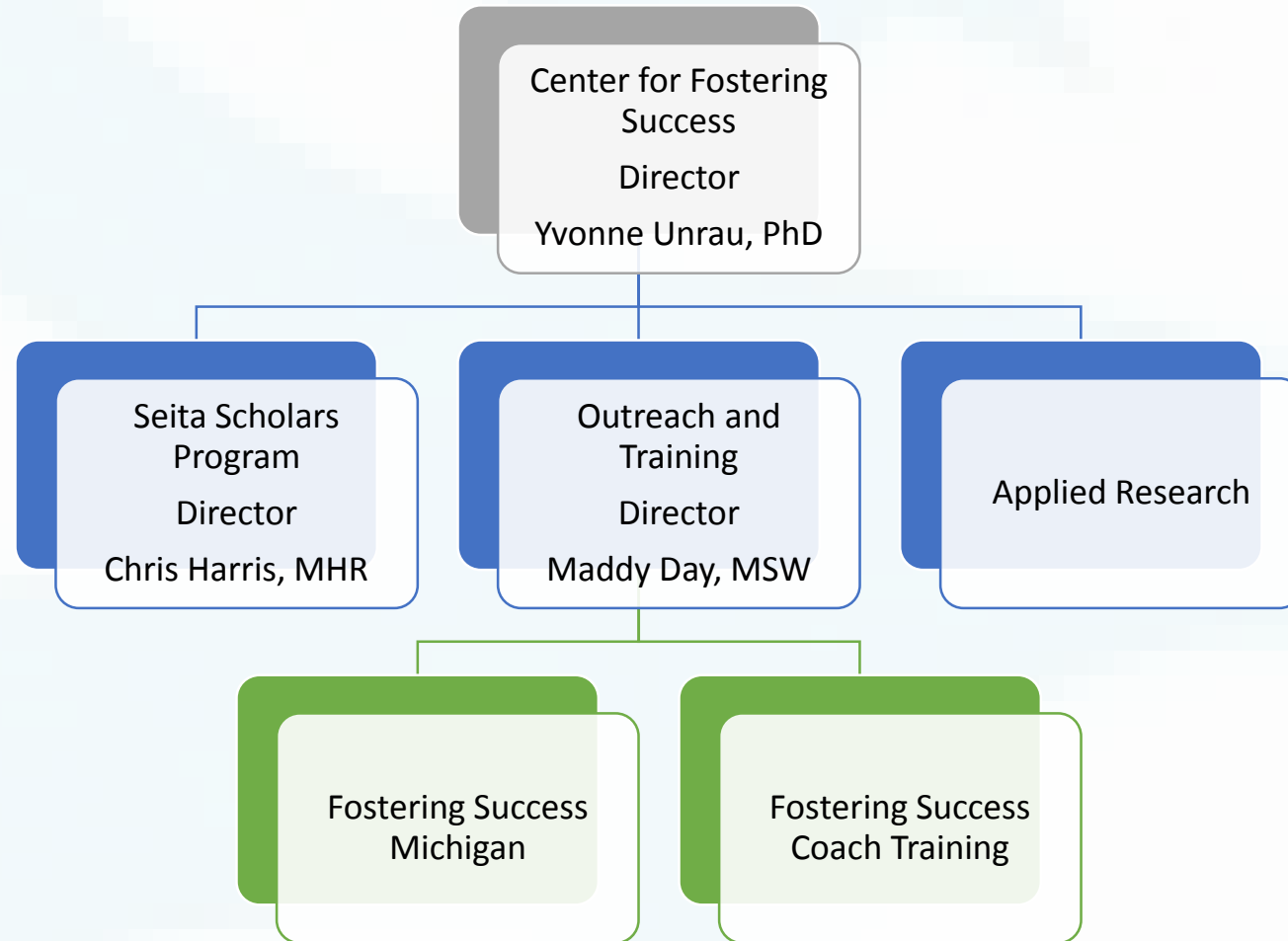
(AFCARS Report, 2015) (U.S. Department of Education, 2015)

What can be
done?

Tremendous return on
investment can be
achieved by providing
effective services and
supports. Take a look at
what's happening in
Michigan to improve
outcomes for youth with
experience in foster care.



Western Michigan University's Institutional Response





A Large Scale Social Problem

We need **to increase access and success in postsecondary education and professional careers** for students from foster care ages 12-25 in Michigan.

5 Conditions of Collective Impact

- Common Agenda
- Backbone Support
- Mutually Reinforcing Activities
 - Shared Measurement
- Continuous Communication

FSM Phases of Collective Impact

Phase	I. Initiate Action	⇒	II. Organize for Impact	⇒	III. Sustain Action & Impact
Years	2012-2015	⇒	2016 -2022	⇒	2022+
Outcomes	Short-term	⇒	Intermediate	⇒	Long-term

FSM Collective Impact Outcomes



Short Term Outcomes:

- Increased number of effective on-campus support programs for students emancipating from foster care.
- Increased understanding of best practices.
- Increased number of organizations enhanced to support youth from foster care.

Intermediate Outcomes:

- Increased enrollment in Michigan higher education institutions.
- Improved college preparation among youth in foster care.

Long Term Outcomes:

- Improved college graduation rates, leading to a successful career transition.

Phase 1: Initiate Action



FSM Phase 2: Building for Sustained Impact

- Goal 1: Create sustainability strategies for the **long term support of the work of Fostering Success Michigan** to ultimately increase access and success in postsecondary education for students from foster care.
- Goal 2: Fortify the work of FSM Network participants through the development and delivery of best practice models that can be taken to scale **ensuring the sustainability of Michigan's collective impact initiative to increase postsecondary education access and success for students from foster care.**

Common Agenda

Fostering Success Michigan has adopted the Lumina Big Goal of **increasing the number of students from foster care who obtain high-quality degrees and credentials to 60% by the year 2025.**

**60%
2025**

Backbone Organization



Fostering Success Michigan supports Michigan's **network of experts** versus being an “expert organization”.

Backbone Organization Strategies

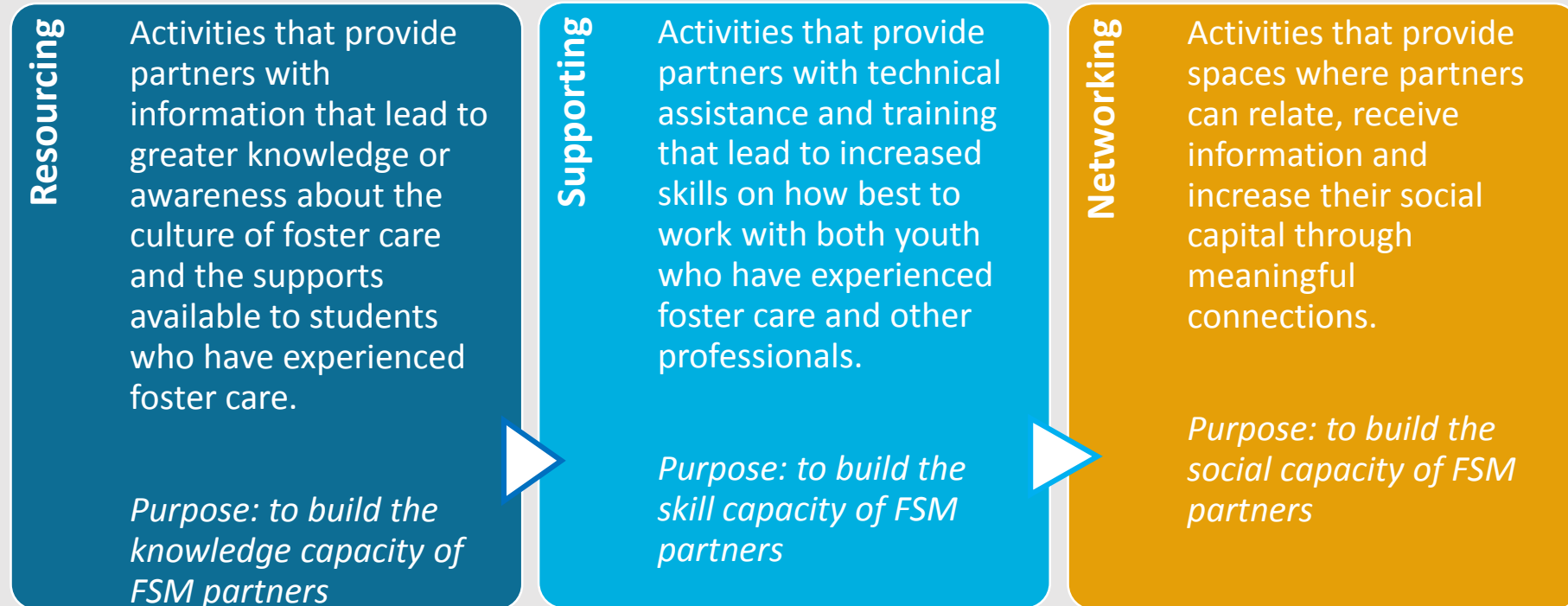


Figure 2: Defining Resourcing, Supporting, and Networking

FSM Backbone Strategies

Resourcing: *Building KNOWLEDGE capacity*

- Youth-friendly resources website
 - FosteringSuccessMichigan.com
 - Over 500 resources
- Accessible and Convenient Resources
 - Examples:
 - Resource Guides
 - Webinars
 - Podcasts

FSM Backbone Strategies

Supporting: Building SKILL capacity

- FSM Higher Education Consortium
 - Regular convening of IL Coaches, Program Directors and Coordinators to share programming ideas, build shared measurement strategies and provide professional development
- Building the Postsecondary Support Network
 - Partnering with SSG to identify Financial Aid Champions, working with institutions to develop their campus support efforts
- Community partner presentations
 - Professional development for FSM partners and their community partners. Ex. Guidance counselors, DHHS Ed Planners, Michigan College Advising Corps, LCANs
- Partner with Fostering Success Coach Training

Michigan Campus Based Support Programs



WESTERN MICHIGAN
UNIVERSITY



BLAVIN SCHOLARS
UNIVERSITY OF MICHIGAN

Kalamazoo**VALLEY**TM
community college



Northwestern
Michigan
College



Ferris Youth Initiative
Inspiring Hope



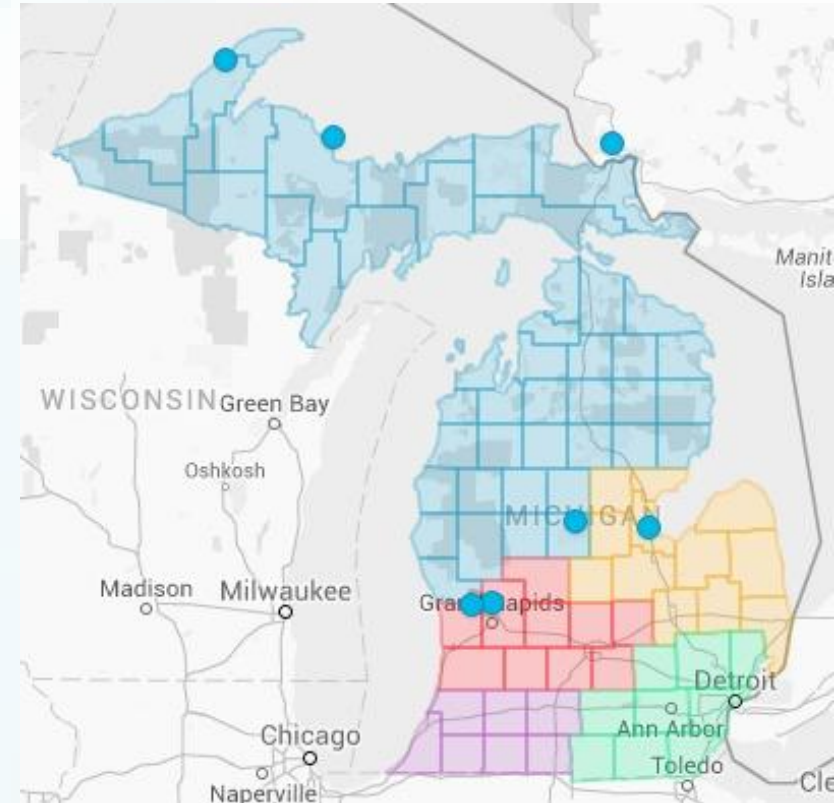
Michigan Model for Campus-Based Support Programs

- Utilizing *Supporting Success* guide by Casey Family Programs
- Programs include:
 - Designated coach providing 24/7 life skills coaching
 - Mentorship opportunities
 - Peer community building
 - Connection to campus champions
 - Advocacy for students on campus and in the community
 - Pre-college outreach and recruitment
 - Financial resources*

Building the FSM Postsecondary Network

7 Designated Campus Champions

- Can be in any department at a postsecondary institution
- Agrees to act as a point person for students with experience in foster care
- May not know the answer, but agrees to find out!



Building the FSM Postsecondary Network



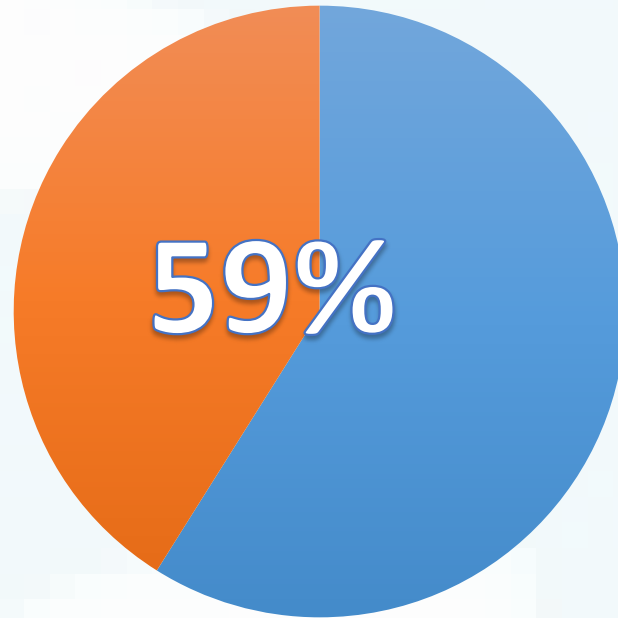
58 Institutions with Financial Aid Champions

- FSM & SSG created special webinar and FSM website toolkit to provide information and resources to Financial Aid professionals on how to assist students in foster care
- Continued collaboration with SSG to provide outreach to students who answer foster care questions on the FAFSA



Building the FSM Postsecondary Network

Of the 112 Accredited, degree-granting colleges and universities (including community colleges)* in Michigan....



66 of Michigan's postsecondary institutions have a at least one designated professional to support students from foster care on campus!

*Carnegie Classification of Institutions of Higher Education

FSM Backbone Strategies

Networking: Building SOCIAL capacity

- Fostering Success Michigan Statewide Summit
 - Annual gathering of partners from across the State to share innovative strategies and partnerships
- FSM Community Collaborative Events
 - 7 community-based meetings co-hosted by community partners and focused on one of the 7 life domains
- Student Leadership Activities
 - Activities to give students from foster care on college campuses across the State a voice in informing the education pipeline process and building the alumni of foster care community

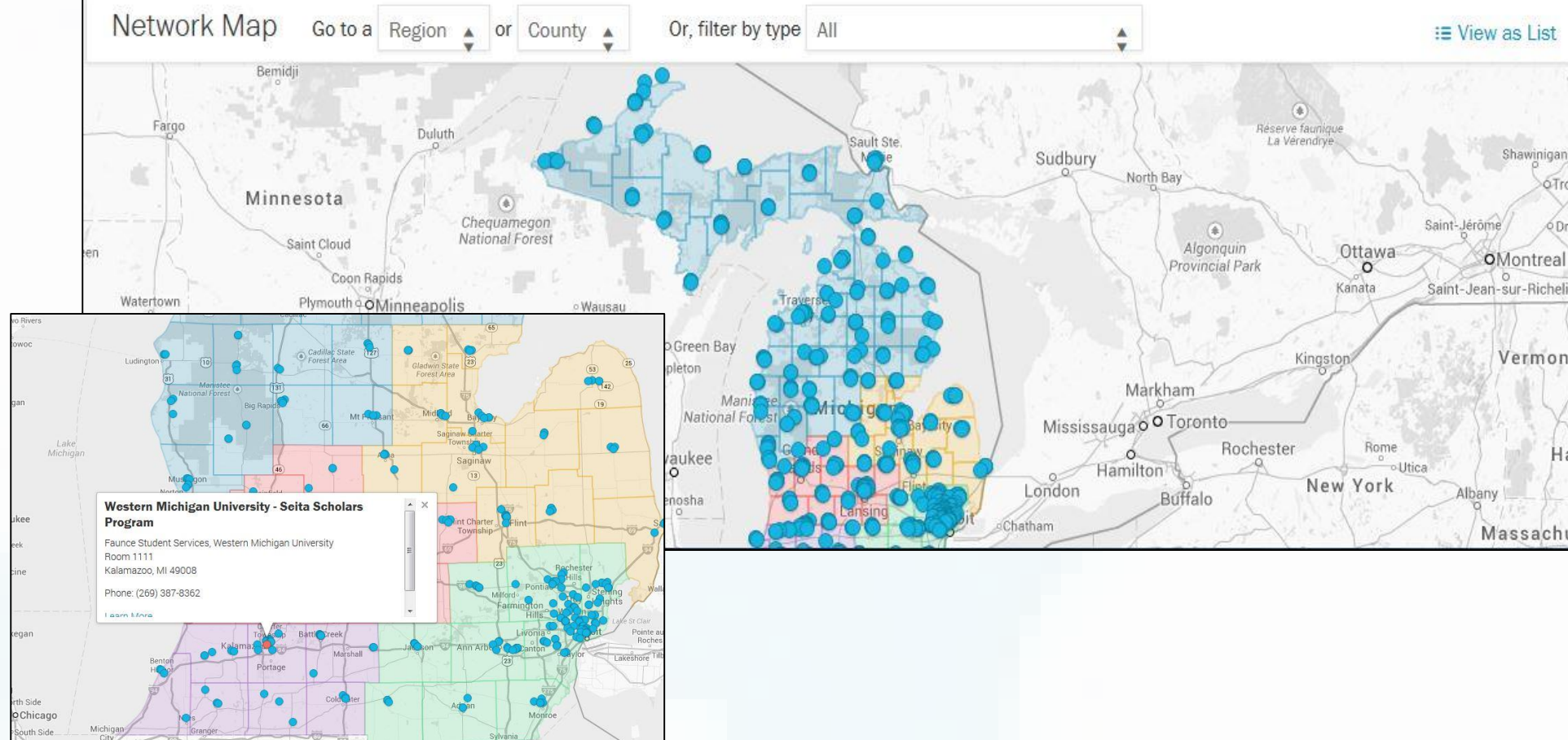
Network

The places and people within our Network are resources for you. Use the map below to find organizations and professionals within your area.

Join the ever growing network of resource and service providers.

Are you a community organization that offers support for youth and alumni of foster care? Become a part of the Fostering Success Michigan Network and make your organization accessible to thousands of youth across the state of Michigan.

[Join Our Network](#)



Statewide Network Map



Mutually Reinforcing Activities

Large-scale social change can only be achieved through the alignment of a diverse group of participants who are connected to each other and share their expertise and experience. Fostering Success Michigan has defined this group as the **FSM Network**.

The FSM Network is made up of students with experience in foster care and the professionals and supportive adults who serve them. Each participant plays a vital role in insulating the education to career pipeline for students with experience in foster care.

Fostering Success Michigan utilizes the 7 Life Domains Framework* to align the activities and resources of the participants in the FSM Network. This alignment allows participants **to do what they do best**.



*Seven life domains for youth in transition from foster care. Adapted from Casey Family Programs (2006)

Mutually Reinforcing Activities

- Postsecondary Education Institutions' staff and campus champions
- Youth and Alumni of Foster Care
- Middle and High School Educators and Staff
- Community Organizations and Other Service Providers
- Caregivers and Mentors
- The Department of Human Services
- Local College Access Networks,
- The Department of Education
- Courts, Law Enforcement and Juvenile Justice System
- Career and Work Forces Services
- Housing champions

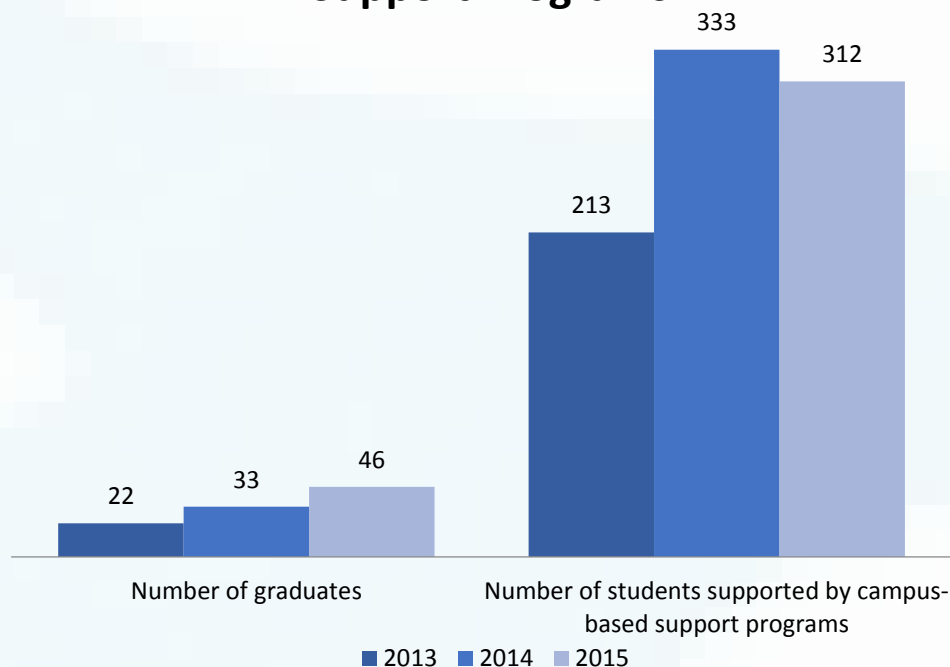


Shared Measurement

Since 2012 participants in the FSM Higher Education Consortium have been contributing to the ongoing development of a shared measurement strategy. However, to accurately communicate the outcomes of the investment in success for students with experience in foster care, it is important to look beyond numbers and understand the indicators of long-term success.

Currently, a shared measurement strategy is being established through the collaborative efforts of the Fostering Success Michigan Higher Education Consortium (FSM HEC). The FSM HEC is identifying indicators that will provide a holistic understanding of how Michigan's students from foster care move through postsecondary education to career pipeline.

Trends in Student Support for Campus Support Programs



A Snapshot of 2014-2015 Student SUCCESS Stories in Michigan

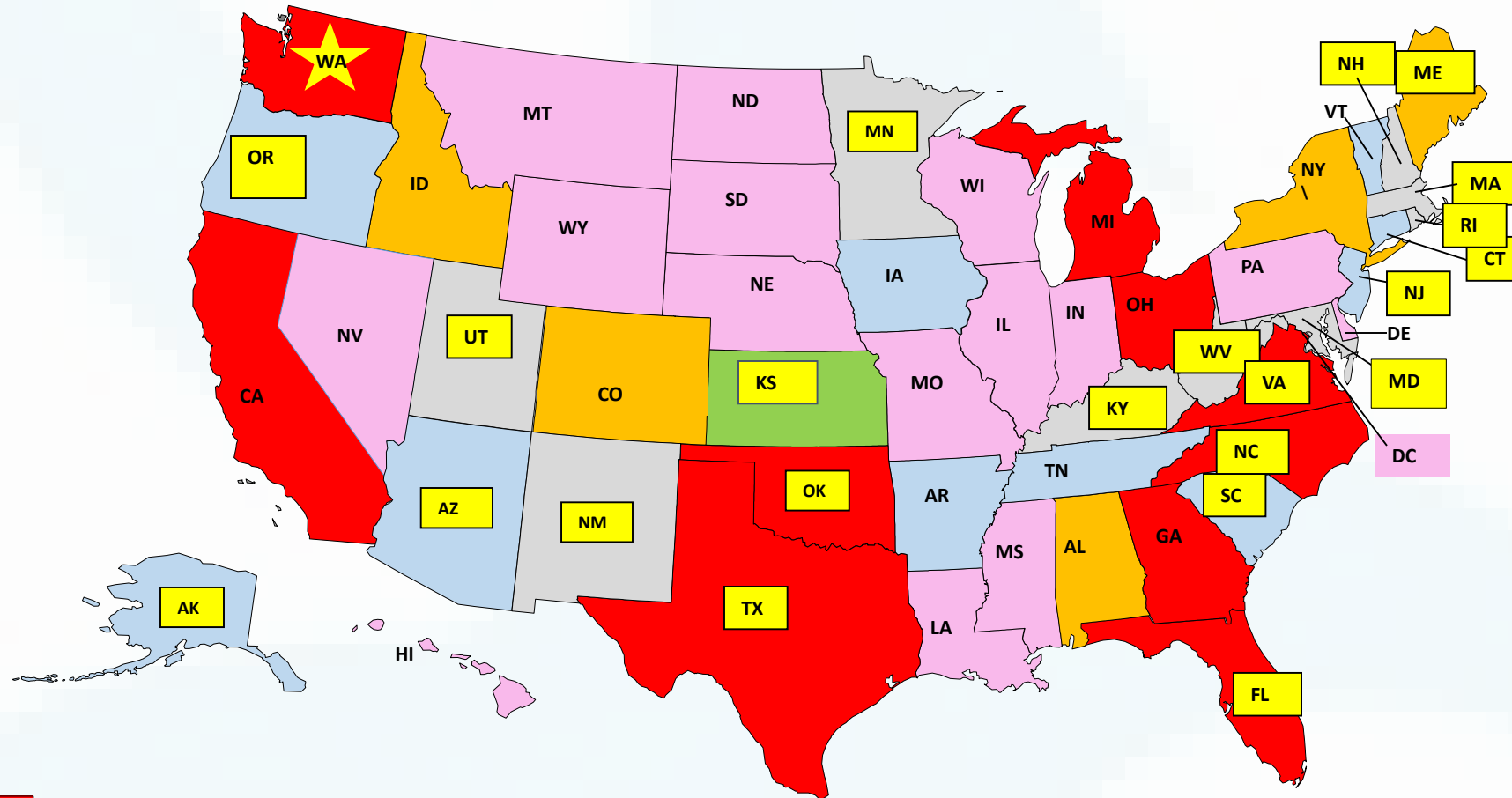
- 49 students placed on Dean's lists
- 24 students studied abroad around the world
- Over 30 student-led conferences, workshops, and events held
- Personal victories like moving into first apartment, saving money for a car, and maintaining a budget!

Continuous Communication

To ensure that our diverse group of partners maintains an awareness of successes, challenges, priority issues, and shared solutions, FSM supports continuous communication through:

- FSM Google Group listserv
- FSM Month eNewsletter
- FSM Social Media
- FSM Community Collaboratives
- FSM Annual Summit
- FosteringSuccessMichigan.com website

Michigan is part of a MOVEMENT!



State Higher Education/Child Welfare Collaborations (10)

Potential for systems collaboration (6)

Some college based support program(s) (11)

Statewide Gear Up Program (1)

State Tuition Waiver Legislation (23)

Passport to College Promise (WA)

Nothing Known (14-including DC)

State Higher Education and Child Welfare Coordinating Organizations



- California – [California College Pathways](#)
- Florida – [Florida Reach](#)
- Georgia – [Georgia Embark](#)
- Kansas – [Kansas Kids @ Gear Up](#)
- Michigan – [Fostering Success Michigan](#)
- North Carolina – [North Carolina Reach](#)
- Ohio – [Ohio Reach](#)
- Oklahoma – [R is for Thursday](#)
- Texas – [Education Reach for Texans](#)
- Virginia – [Great Expectations](#)
- Washington – [Passport to College Promise Scholarship](#)

Questions and Answers

We welcome your questions and comments! Using your control panel on the right side of your screen, you may use the chat or questions function.

Thank You for Participating!



If you have any questions, please feel free to contact:

fostering-info@wmich.edu

-OR-

Maddy.Day@wmich.edu

This webinar will be available on our website, so
feel free to share!!!



WESTERN MICHIGAN UNIVERSITY